

Figure 2.7. Sample unit layout for Runway 18-36 at Savannah-Hardin County Airport.

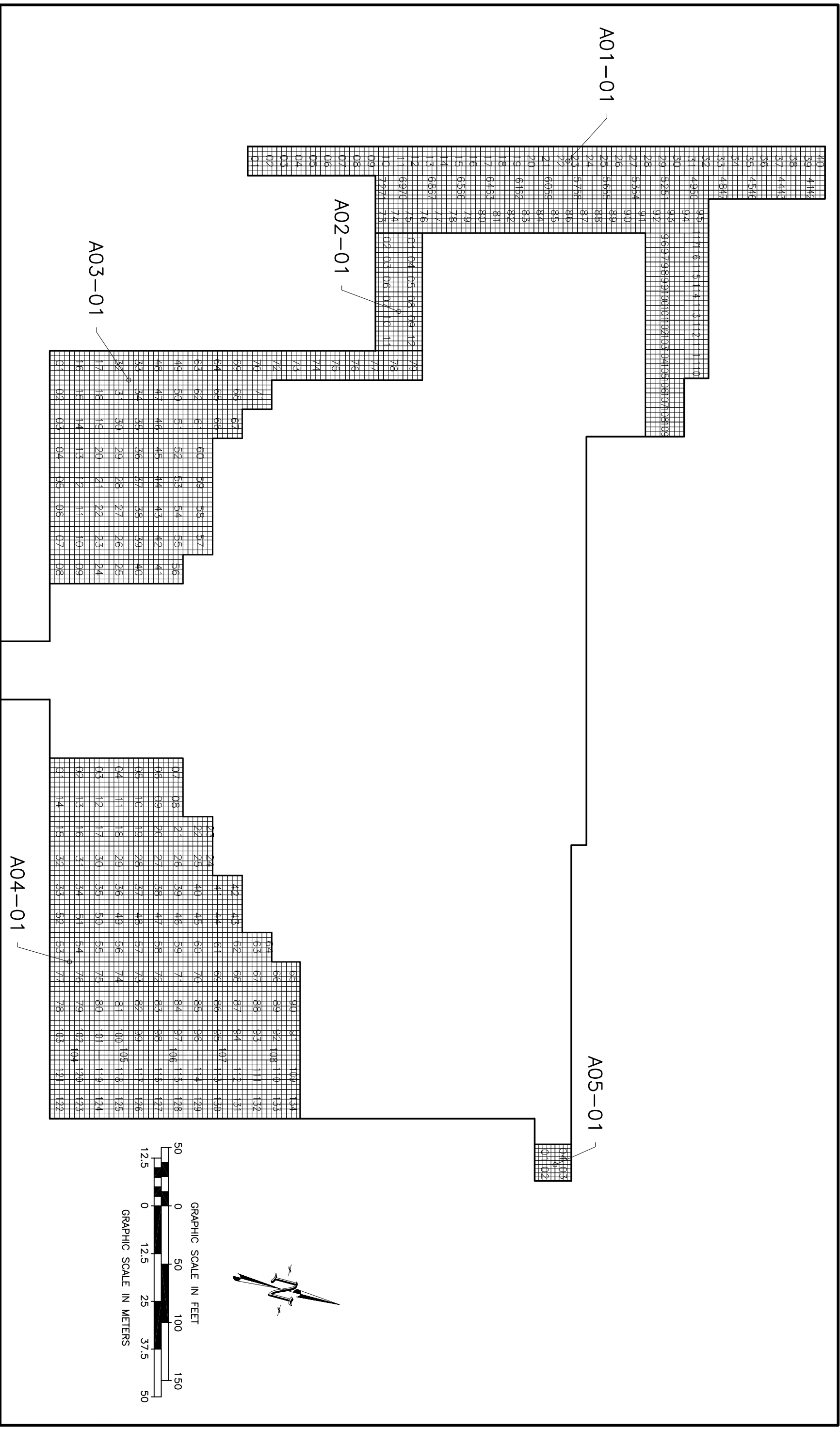
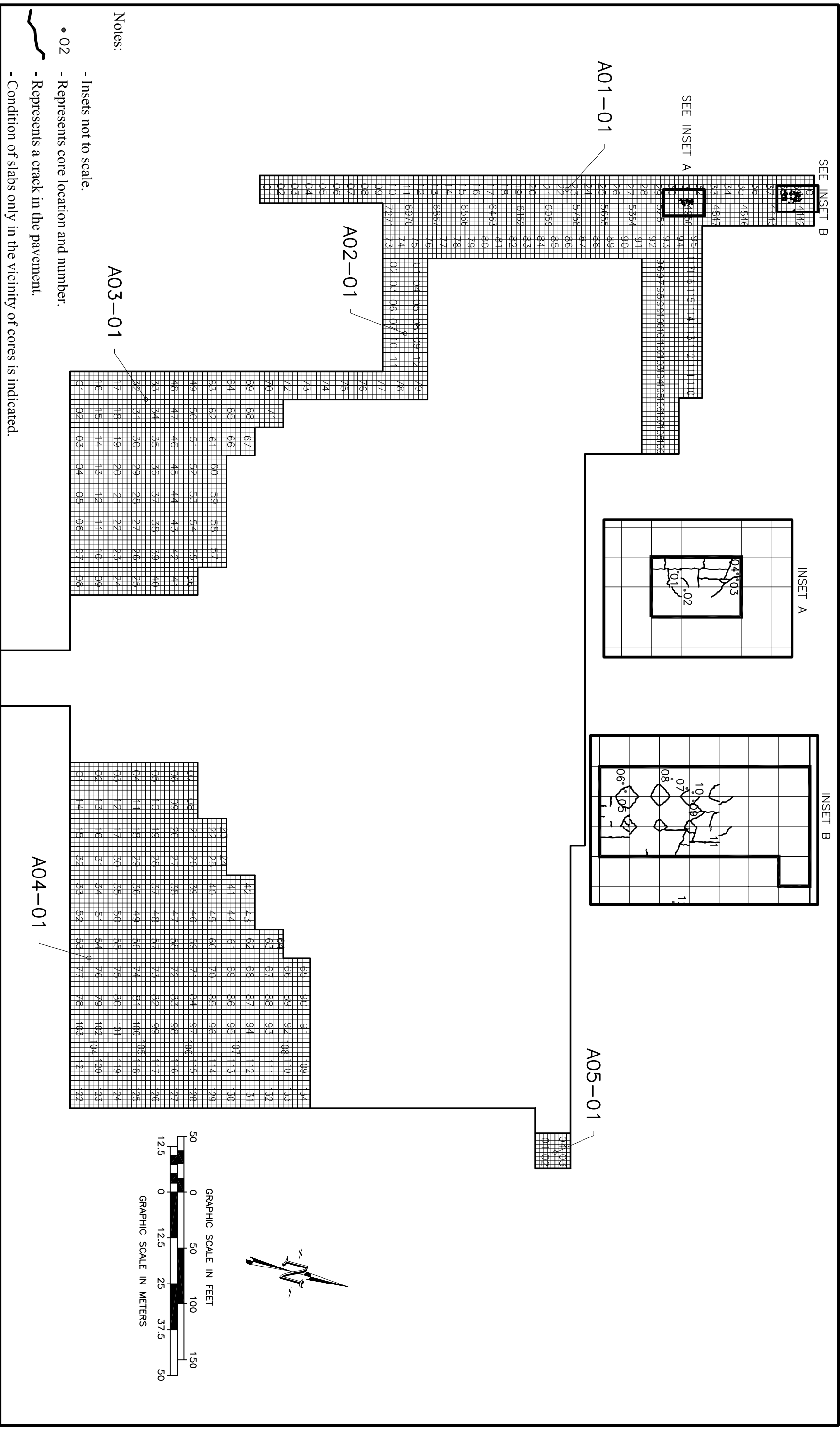


Figure 2.12. Layout of sample units at Spirit of St. Louis Airport.



Notes:

- Insets not to scale.
- 02 - Represents core location and number.
- Represents a crack in the pavement.
- Condition of slabs only in the vicinity of cores is indicated.

Figure 2.17. Location of cores taken at the Spirit of St. Louis Airport.

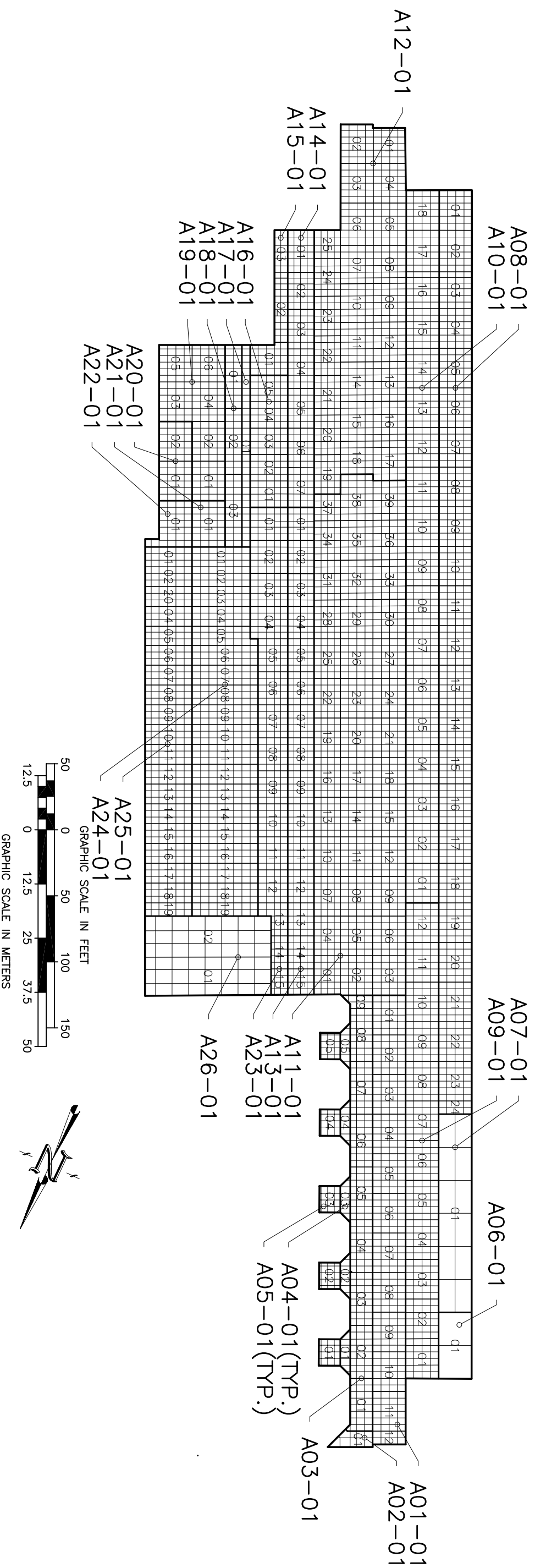


Figure 2.21. The NSB apron was divided into 26 features to encompass all variables.



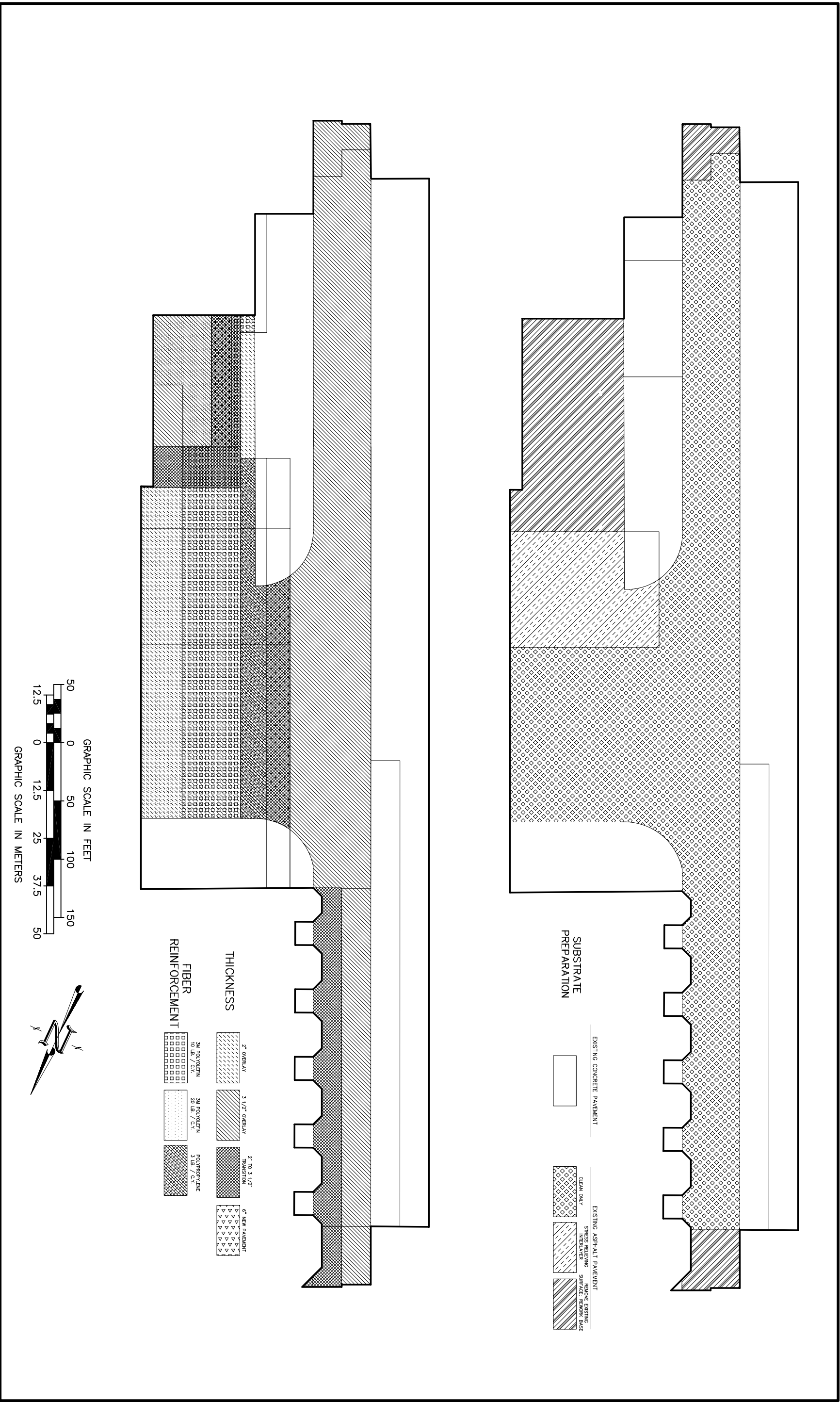
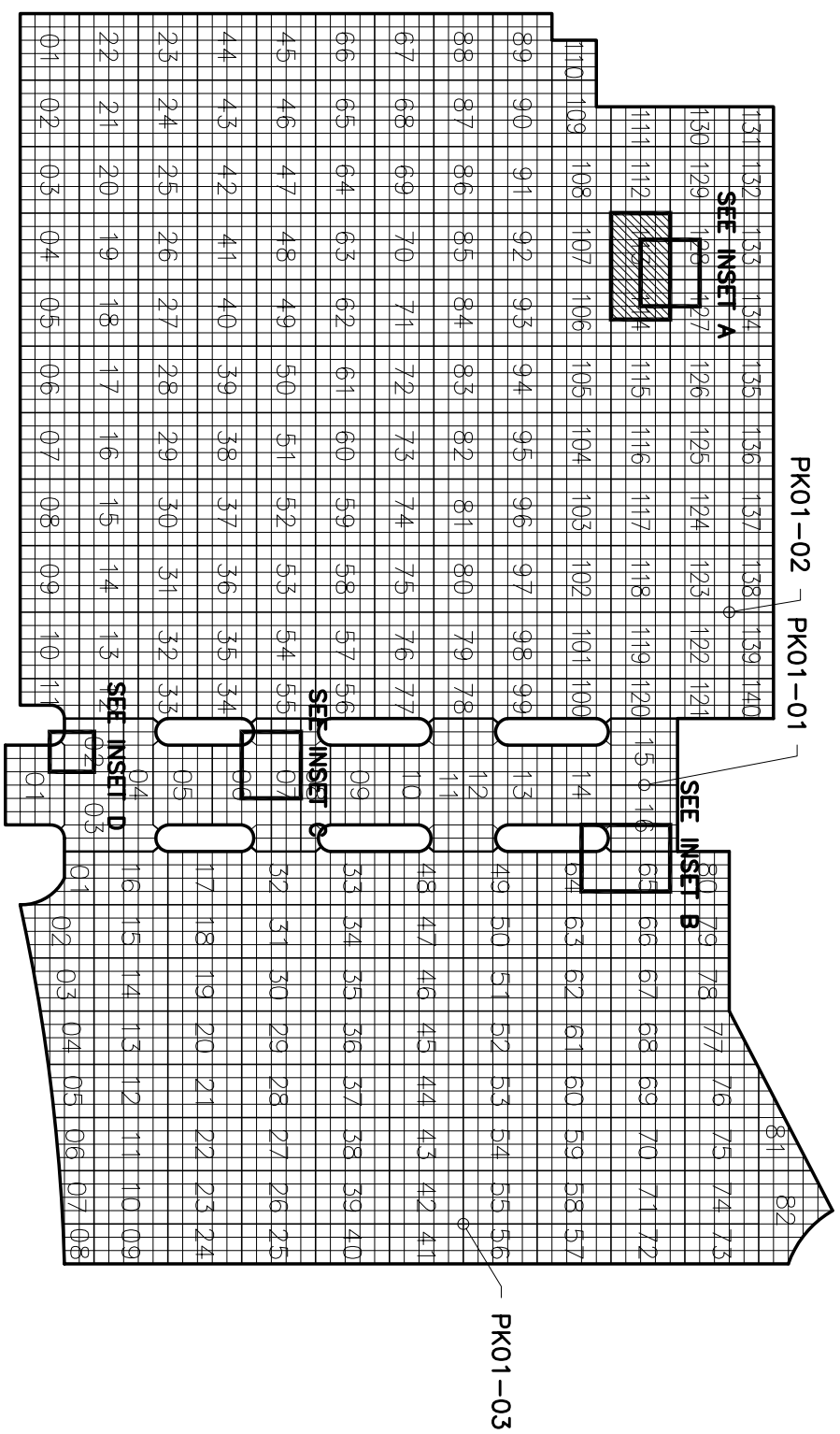
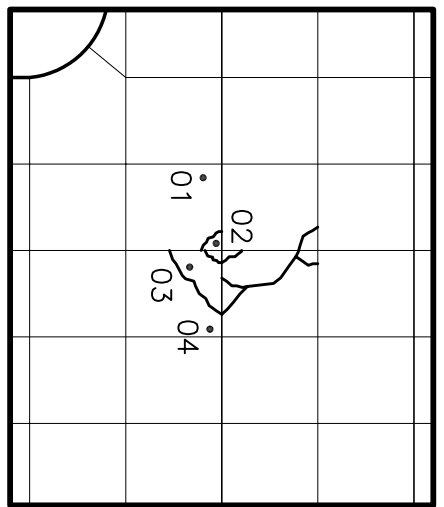
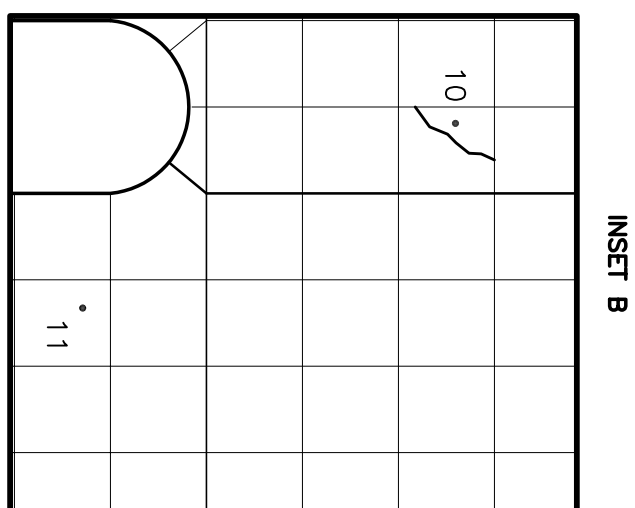
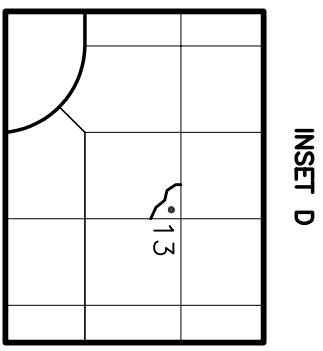
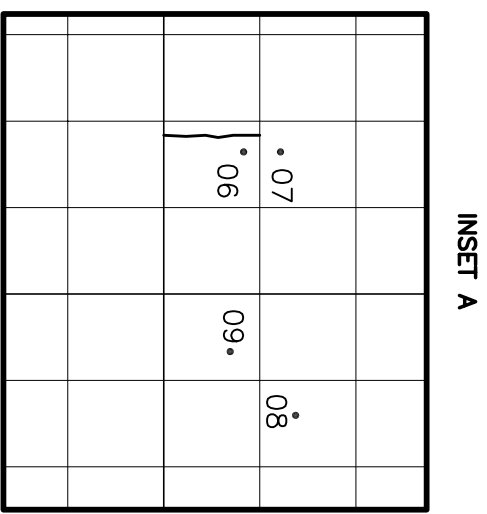


Figure 2.20. UTW thickness, location of areas with fibers, and different surface preparation methods at NSB.



Notes:

- Cores 5 and 12 were not taken.
- Insets are not to scale.
- Represents area with steel reinforcement.
- Represents core location and number.
- Represents a crack in the pavement.
- Condition of slabs only in the vicinity of cores is indicated.

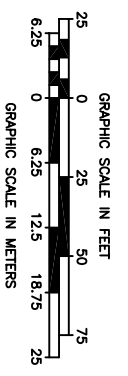


Figure 2.46. Location of cores removed at Life Bridge Christian Church.

